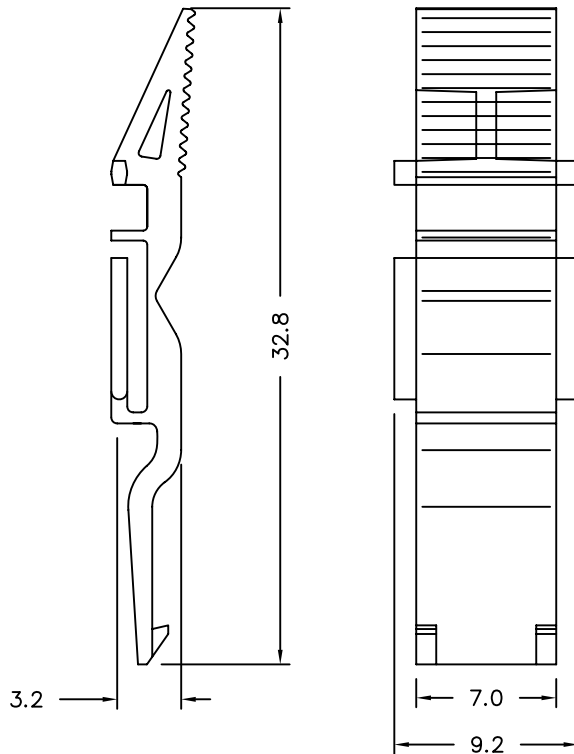
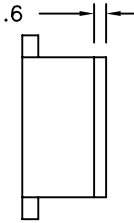




NOTES:

- SEE APPLICATION SPECIFICATIONS GS-20-002 & GS-20-003 FOR INSTRUCTION ON WIRE INSERTION AND ASSEMBLY OF COMPONENTS FOR CONNECTORS USING THESE LATCH FINGERS.
- PART NUMBERS -0021 TO -0071 HAVE LIMITED AVAILABILITY. PLEASE CONSULT YOUR FCI REPRESENTATIVE BEFORE ORDERING.
- MATERIAL:
ULTEM 1010, FLAME RETARDANT UL-94-V0.
- THE PRODUCTS WHERE THE PART NUMBER ENDS IN LF MEET THE EUROPEAN UNION DIRECTIVES AND OTHER COUNTRY REGULATIONS AS DESCRIBED IN GS-22-008.
- THESE PRODUCTS LISTED ON THIS DRAWING WILL NOT WITHSTAND WAVE SOLDER OR REFLOW OPERATIONS.
- FOR LEAD FREE PART NUMBERS, ADD AN 'LF' SUFFIX. EXAMPLE 72389-001LF.



* SEE NOTE 2

PART NUMBER	COLOR
72389-0011	SEE NOTE 6 BLACK
* 72389-0021	SEE NOTE 6 WHITE
* 72389-0031	SEE NOTE 6 ORANGE
* 72389-0041	SEE NOTE 6 GREEN
* 72389-0051	SEE NOTE 6 BLUE
* 72389-0061	SEE NOTE 6 BROWN
* 72389-0071	SEE NOTE 6 GRAY

mat'l. code				surface		tolerance		projection		product family		
SEE NOTES				ASME Y14.5		ASME Y14.5				METRAL CABLE		
ltr	ec'n no	dr	date	tolerances unless otherwise specified						title		
A	V71561	JRV	11/5/97	angles	xx.05	SHORT				LATCH FINGER		
B	V71674	JRV	12/12/97	lines	xx.05	ROW METRAL				SCALE 1:1		
C	V12694	LSS	11/16/01	0° ±2'	UNSHIELDED		SCALE 1:1				CONNECTOR	
D	V05-0594	VS	08/08/05	chr	J.R.VOLSTROF	12/12/97				sheet 1 of 1 size		
E	V06-0613	JRV	2006-06-22	engr	J.R.VOLSTROF	12/12/97				dwg no		
				chr	J.R.VOLSTROF	12/12/97				72389 A4		
				appd	J.R.VOLSTROF	12/12/97				type CUSTOMER Drawing		
sheet index	revision sheet	E	1									